



LM



Digital Humanities (Fall 2013)

Posted by *Humanities & Cultural Studies* on Jul 31, 2013 in *Humanities*

Digital Humanities considers what it means to be human in the digital age. How have we changed since art and science have been merging in the tech-

nology of our lives?

81001 HUMN 2151.01 TR 11A-12:15P H/SS-118 ONLINE | #DIGHUM

This section of HUMN 2151 “Digital Humanities” will look at the intersection of the humanities and the digital world. We will look at how traditional approaches to the study and creation of cultural texts are being influenced and changed by microprocessing technologies. Our study will begin in the latter part of the twentieth century, include a primer of postmodernism, and focus on new media approaches to cultural production and consumption.

DigHum on G+

COURSE GOALS

Since this class is a requirement for General Studies majors, key assessments of writing and public speaking must be measured. All students must be able to analyze problems in more than one discipline; therefore the course requirements will be directed toward these goals.

- To develop and enhance the students’ critical and analytical ability to read and understand the texts of thinkers in various disciplines, their contexts and significance, through and variety of pedagogical strategies.

- To develop and enhance the students' ability to think critically and creatively and to write and to speak effectively about the arts and culture.

STUDENT LEARNING OUTCOMES

1. Students will demonstrate effective oral communication skills.
2. Students will demonstrate effective writing and research skills.
3. Students will demonstrate the ability to effectively analyze elements of the given course topic using more than one discipline.

TEXTS AND VIDEOS

There are no traditional textbooks in this course. Readings will be made available as web links and PDFs. However, additional small fees might be incurred to purchase or to rent videos and texts for certain lessons. I will try to keep these expenses to a minimum.

COURSE POLICIES & PROCEDURES

Students are held accountable for knowing and practicing each of the [COURSE POLICIES](#) and [PROCEDURES](#). Consider them like the law: the excuse “I didn't know” will carry no weight. These policies and procedures are applicable to every course I teach.

As a Middle Georgia State College student and as a student in any of my classes, it is your responsibility to read, understand, and abide by the MGSC Student Code of Conduct from the [MGSC STUDENT HANDBOOK](#) (PDF).

Students may withdraw from the course and earn a grade of “W” up to and including the midterm date, which occurs on **October 16, 2013**. After midterm, students who withdraw will receive a grade of “WF.” The MGSC Withdrawal Form, which is available online or in the Office of the Registrar, must be signed by the instructor in advance of withdrawal.

REQUIREMENTS

Digital Humanities is composed of ten lessons, each worth 10% of the a student’s final grade. Students must complete *all lessons* in order to successfully pass the course. Generally, these lessons will be composed of discussion, research, reading, and multimedia presentations. Details will follow in each lesson. See “[HOW TO DO WELL IN MY CLASS.](#)”

Please read each lesson at the beginning of the semester, so you have an understanding of what will be expected of you during the semester. Some lessons will take longer to complete than others. Do not procrastinate.

In addition to the lessons, two additional assignments must be completed.

CREATIVE CONTRIBUTION PROJECT

All students will be responsible for a course research project on any topic relating to the digital humanities. Student may use the medium of their choice — video, blog, audio, animation, etc. — anything but a traditional academic essay. The idea here is to be creative in your approach. See “[CREATIVE PROJECT](#)” for more detailed information.

PRESENTATION

All students will be responsible for a five minute oral presentation that introduces their course project to the class. See “[PRESENTATION GUIDELINES](#)” for more information.

LESSONS SCHEDULE

Assignments are always due on **Fridays at noon**. Know that on Friday of each week, you should have something to submit for evaluation, even if it’s just participation on Twitter. Due dates are indicated in parentheses after the lesson’s title. Some lessons will require more work, so you should familiarize yourself with each lesson well before its due date. Be sure to plan ahead and begin lessons early. Most of them require discussion which becomes increasingly difficult as the due date nears.

Please note that while the course has its hashtag (see below, right), each lesson will also have its own hashtag. Be sure to always use the lesson’s hashtag when tweeting about the lesson, so I will see your tweets in my evaluation for that week.

All lessons are hosted on LITMUSE.EDU, the support server. See “[START HERE: ONLINE COURSES](#)” for more information.

View Lessons

- Lesson 0: [FOUNDATIONS COURSE](#), containing two lessons (8/30)
- Lesson 1: [DIGITAL HUMANITIES](#) (8/30)
- Lesson 2: [POSTMODERNISM](#) (09/06)
- Lesson 3: [CYBERPUNK](#) (09/13)
- Lesson 4: [CYBORG](#) (09/20)
- Lesson 5: [CYBERCULTURE](#) (09/27)
- [MIDTERM REPORT](#) (10/04)
- Conferences (Week of 10/08) – Last day to drop (10/16)
- Lesson 6: [SECOND LIFE](#) (10/18)
- Lesson 7: [POSTHUMAN](#) (11/01)
- Lesson 8: [APOCALYPSE](#) (11/08)
- Lesson 9: [SINGULARITY](#) (11/15)
- Lesson 10: [CREATIVE PROJECT](#) (11/22)
- Thanksgiving (11/29)
- Presentations Week (12/03)
- Project Due (12/13)

CATALOG INFORMATION

The course will explore a selected topic in the humanities from an interdisciplinary perspective.

#DigHum

0

DigHum, Fall 2013, HUMN 2151

< Singularity

Writing for Digital Media (Fall 2013) >

0 comments

★ 0



Leave a message...

Newest ▾

Community

My Disqus

Share

No one has commented yet.

ALSO ON LITMUSE

[What's this?](#)

Writing Well

42 comments • 3 months ago



Maranda McAllister — Dr. Lucas's "Writing Today" really hit home for me in that I have always felt as though I produced better

Postmodernism

17 comments • 3 months ago



Ellie Barbee — What is postmodernism? After reading all of the provided readings, I still couldn't get a good understanding of what

Cyberculture

23 comments • 3 months ago



Faith Morgan — William Gibson coined the term "cyberspace" originally in his work "Burning Chrome" and in "Neuromancer" it is

First Post

40 comments • 3 months ago



Maranda McAllister — Linking is all about letting the user know where you are taking them. A good link is both well placed and

Comment feed

Subscribe via email

Connect

Get all updates by subscribing and connecting with LitMUSE via the social networks below.



Search



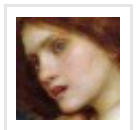
Dr. Gerald R. Lucas

Associate Professor of English
Media, Culture, and the Arts
Middle Georgia State

[About Me](#) | [Blog](#) | [Portfolio](#)

About LitMUSE

LitMUSE is the courseware web site of Dr. Gerald R. Lucas. This site contains course information, policies, and resources for the students of Dr. Lucas.



[Read More](#)

All content by [Gerald R. Lucas \(ORCID\)](#) | [Disclaimer and License](#) | [Terms of Use](#) | [Privacy Policy](#) | [RSS](#)





Course Policies

The following are general policies applicable for all the courses I teach, both traditional, in-class courses, and those taught online.

Any additional policies or changes will be outlined under the specific course, so consult your specific syllabus for a more nuanced statement of policies.

As a Middle Georgia State student and as a student in any of my classes, it is your responsibility to read, understand, and abide by the Student Code of Conduct from the [STUDENT HANDBOOK](#) (PDF).

ASSIGNMENTS

Any assignment you submit for evaluation should be the best that you can make it: relatively free of errors, word-processed, and formatted according to MLA guidelines. Late work is unacceptable. Plan ahead and complete

work early so any potential difficulties may be avoided. [[READ MORE...](#)]

ATTENDANCE

Attendance is mandatory and will be recorded daily. Class failure will be the result of too many absences. Student conduct should follow the college's guidelines and reflect behaviors that demonstrate their active participation as learners. Class time will be spent on lecture, discussion, and other activities that encourage active class participation for the students. Real learning requires engaging the class materials, and students will be partially evaluated on their participation. [[READ MORE...](#)]

COMMUNICATION

These days, we have so many choices for communicating. However, some ways are better than others, and I encourage you to use those. [[READ MORE...](#)]

Bring your smart phone, your tablet, or your laptop to class with you daily, and expect to use it as an integral part of the lesson. [[READ MORE...](#)]

EVALUATION

Evaluation depends on overall student performance. While the particulars of evaluation might differ between classes, it will usually depend on the successful completion of **all** requirements. [[READ MORE...](#)]

MATERIALS

Course readings are an integral part of the class and should be brought daily. When readings are assigned to be discussed in class, please bring a copy of the reading with your reading notes ready to participate in the discussion.

[\[READ MORE...\]](#)

ONLINE COURSES

Online courses are not for the average student since they require a particular set of skills and dedication. [\[READ MORE...\]](#)

Online courses use this web site for all course-related activities, including lessons. [\[READ MORE...\]](#)

PLAGIARISM

Plagiarism is the theft of another's intellectual property and the attempt to pass it off as original. The punishment will be class failure and potentially result in more serious academic penalties. [\[READ MORE...\]](#)

Last updated: **December 17, 2012 @ 12:11pm**

Connect

Get all updates by subscribing and connecting with LitMUSE via the social networks below.



Search



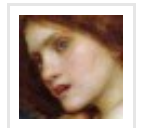
Dr. Gerald R. Lucas

Associate Professor of English
Media, Culture, and the Arts
Middle Georgia State

[About Me](#) | [Blog](#) | [Portfolio](#)

About LitMUSE

LitMUSE is the courseware web site of Dr. Gerald R. Lucas. This site contains course information, policies, and resources for the students of Dr. Lucas.



[Read More](#)

All content by [Gerald R. Lucas \(ORCID\)](#) | [Disclaimer and License](#) | [Terms of Use](#) | [Privacy Policy](#) | [RSS](#)



Contact

OFFICE HOURS, FALL 2013

- MW 2-3:30pm
- TR 12:15-2:15pm

Try me via [GOOGLE HANGOUTS](#) at any reasonable, weekday hour using the email address below. Also, please do not expect a response on Twitter after **6pm on weekdays or anytime during the weekend**. I may be available, but I also need some down time. Thanks for your understanding.

I try to make myself as available as possible during the first couple weeks of a semester, including evenings and weekends.

MIDDLE GEORGIA STATE

Media, Culture & the Arts
100 College Station Drive
Macon, GA 31206
H/SS-117

Tel: (478) 471-5761

Fax: (478) 757-3624

Email: DRGRLUCAS@GMAIL.COM



Name

Email

Message

Solve: 3

+ 6

Send a copy of this email to yourself

Submit

Connect

Get all updates by subscribing and connecting with LitMUSE via the social networks below.



Search



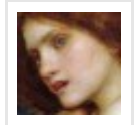
Dr. Gerald R. Lucas

Associate Professor of English
Media, Culture, and the Arts
Middle Georgia State

[About Me](#) | [Blog](#) | [Portfolio](#)

About LitMUSE

LitMUSE is the courseware web site of Dr. Gerald R. Lucas. This site contains course information, policies, and resources for the students of Dr. Lucas.



[Read More](#)

All content by [Gerald R. Lucas \(ORCID\)](#) | [Disclaimer and License](#) | [Terms of Use](#) | [Privacy Policy](#) | [RSS](#)

